



# **Model G6 Outdoor Sauna Room**

## **Electrical Installation**

Note: Please read manual before installation



**All the electrical connections must be made by certified electrician.**

1. Two electrical boxes (120 VAC and 240 VAC) are located behind wooden door.



Unlock the door with small key, that comes with sauna.





2. Behind wooden door you will find electrical boxes. Upper box is 120 VAC for LED lights and lower one 240 VAC for heater control unit. Electrical box doors can be opened with flat head screwdriver.





3. In order to access electrical connections you must unscrew metal covers.



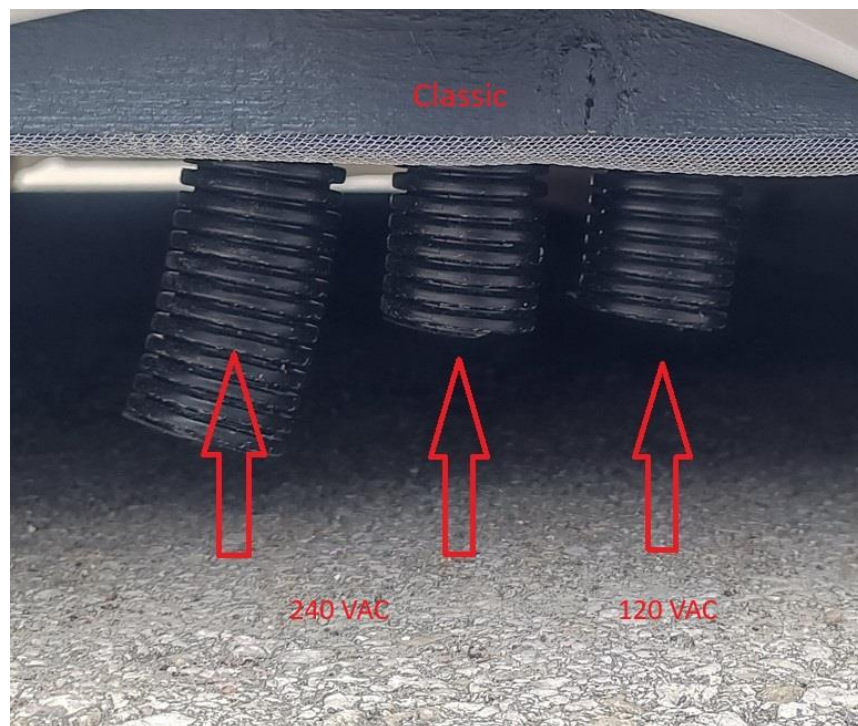


4. After you have removed metal covers, you will find distribution terminal blocks, where inbound power cables must be connected. Lights/Ventilation circuit 120VAC, 9amps max. Heater circuit 240VAC, 11 kW 50amps max.





5. Underneath the sauna, there are three conduit pipes, for running 120VAC and 240VAC power. Left two pipes feeds 240VAC. Right single pipe feeds 120VAC.





6. Cables will enter 240 VAC box through holes in bottom of electrical cabinet.



Cables in 120 VAC box will enter through the side of the cabinet.





7. Wires must be connected to distribution terminal blocks and tightened with the screws.

240 VAC box:

L1 – 120 VAC live wire

L2 – 120 VAC live wire

N – neutral wire

PE – ground wire



120 VAC box:

L1 – 120 VAC live wire

N – neutral wire

PE – ground wire

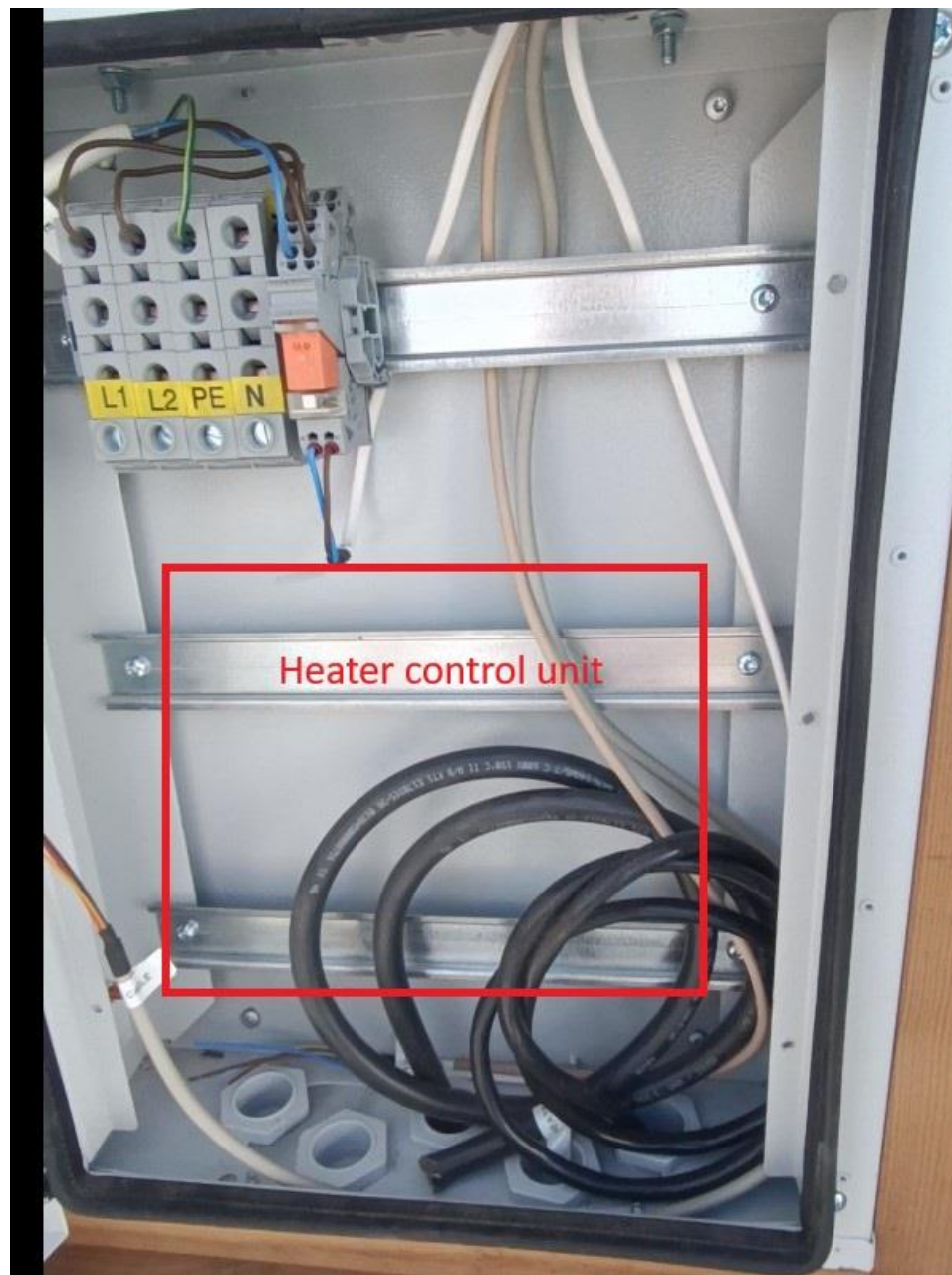






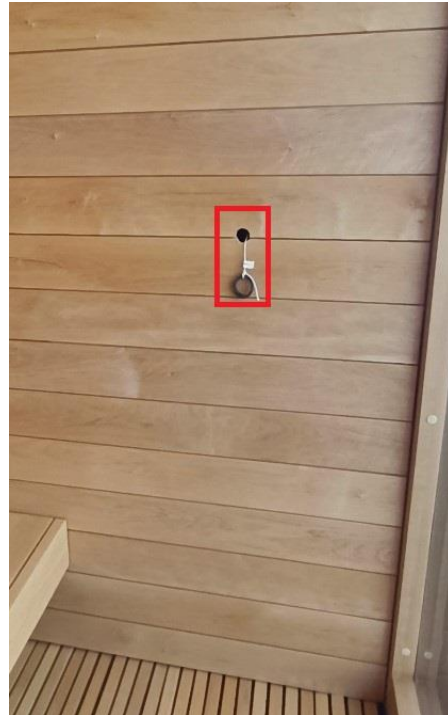
- 240 VAC electrical cabinet has free space for mounting heater control unit box. All cables that need to be connected to control unit are labeled.

**Follow Heater manufacture installation manuals must be followed for correct wire gauge.**

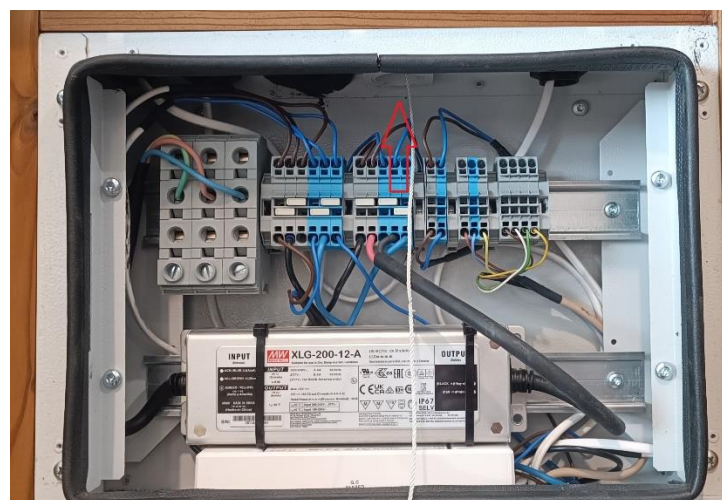




9. Inside the sauna there are preparations made for controller installations. There is string though conduit, that leads to the 120 VAC electrical box. String and controller cable must be tied and pulled from the other side of the string to replace string with the cable. Follow the manufacture installation manual to choose correct cable.



Controller cable location inside 120 VAC electrical box. Connect cable to terminal block with wire labeled contol cable.





10. Door sensor cable is ran trough door threshold. While mounting heater, the door sensor must be installed. Door sensor must be flush with the door threshold and the magnet



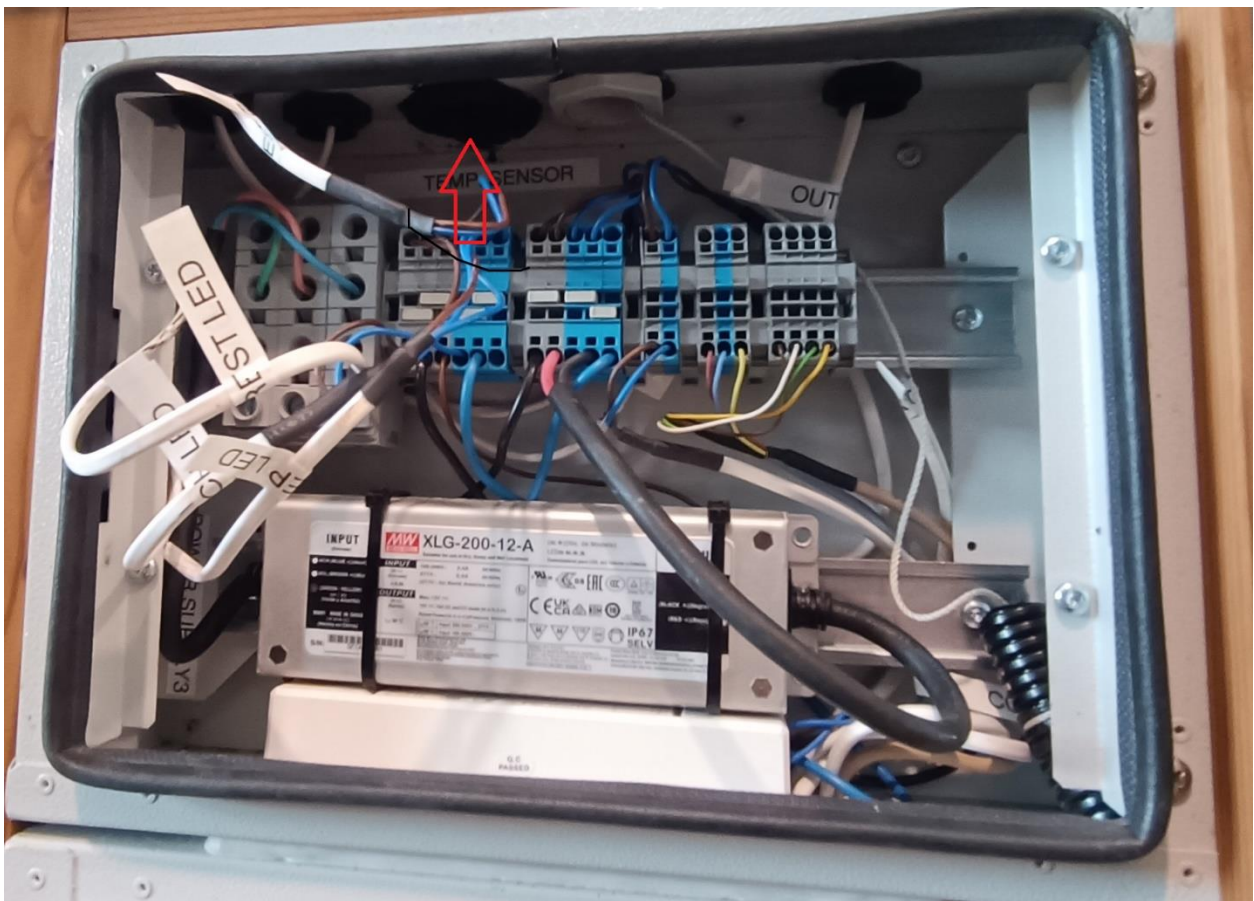


11. To install temperature sensor, hole needs to be thrilled through heater side of the wall. Drilled hole must be at least 2 inches deep, but not more than 3 inches. Location of pipe is shown on page 13. Measurement must be taken from the window frame and the ceiling.



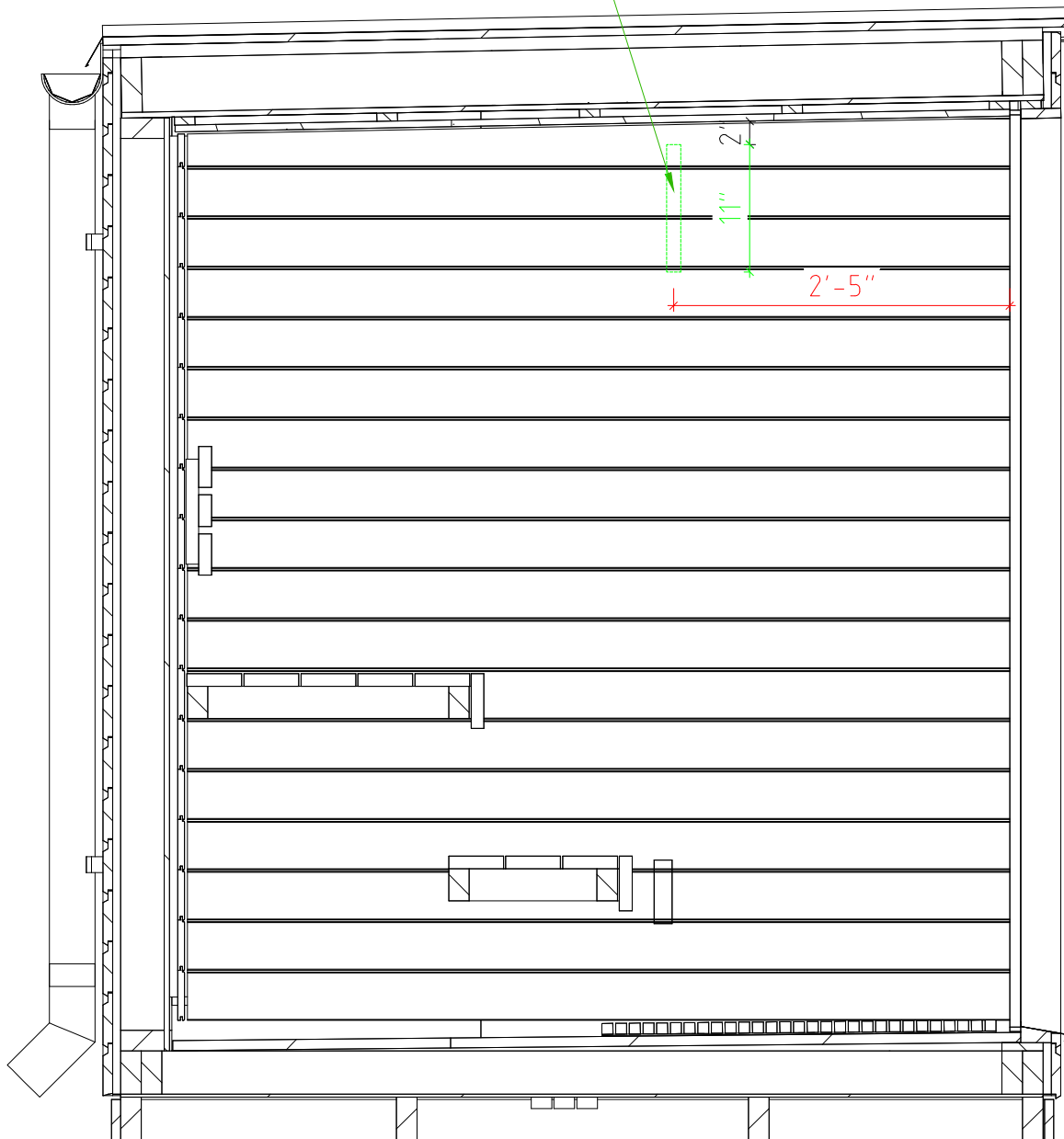


Inside the wall is rigid pipe, which leads to the 120 VAC electrical box. After the hole is drilled, cable must be pulled through hole and pipe. Follow heater manufacture installation manuals.





Pipe location in the wall for temperature sensor  
height 2-13 inches from ceiling  
Client can drill the hole in the appropriate height  
and rurd the wire through





Technical Support  
(224) 253-5909